








# RFC Editor Report

IETF 100  
Singapore

# SLA – RFC Editor Time (RET)

	2016				2017			
	Q1	Q2	Q3	Q4	Q1	Q2	Q3	Q4 (so far)
<b>Submissions</b>								
<b>Pages</b>	1582	1919	2263	2008	2150	1091	1114	551
<b>Docs</b>	66	75	79	64	101	52	49	24
<b>PGTE</b>	1577	2124	2202	1892	1981	1132	1018	602
<b>Publications</b>								
<b>Pages</b>	1937	1953	2089	2118	2326	1720	1430	580
<b>Docs</b>	91	89	72	58	90	64	59	25
<b>Docs met SLA</b>	15	88	72	57	89	62	45	23
<b>SLA tier</b>	Tier 1	Tier 2	Tier 2	Tier 2*	Tier 2	Tier 2*	Tier 1	
<b>SLA</b>								

**Tier 1**  
 PGTE < 1950  
 67% RFCs pub <= 6 wks RET

**Tier 2**  
 1950 < PGTE < 3072  
 50% RFCs pub <= 12 wks RET  
 (given quarter or subsequent quarter)

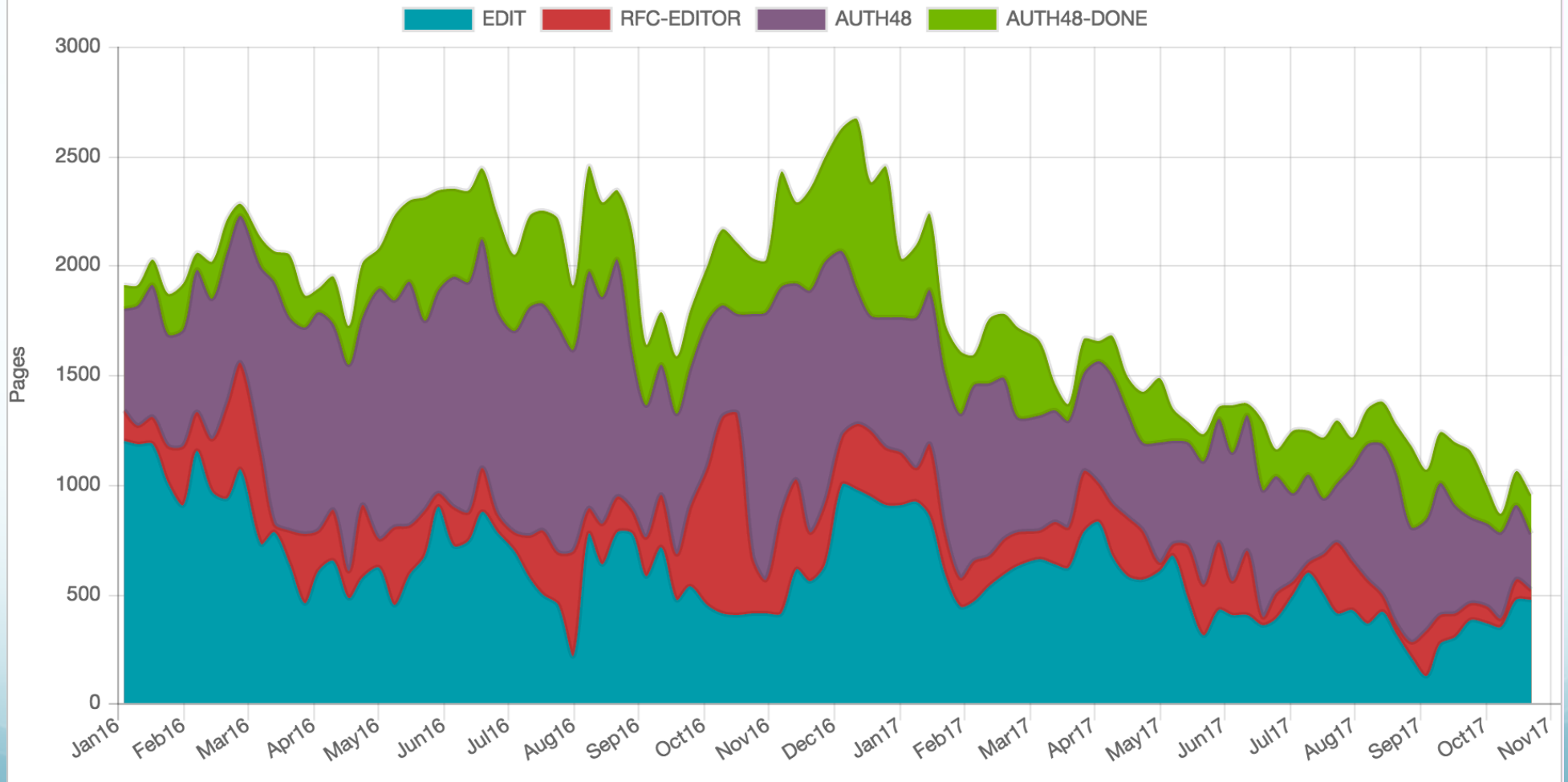
**Tier 3**  
 3072 < PGTE  
 possibly renegotiate expected  
 RET

“Tier 2\*” indicates when Tier 2 is being applied in the “subsequent quarter” per the SLA as noted above)

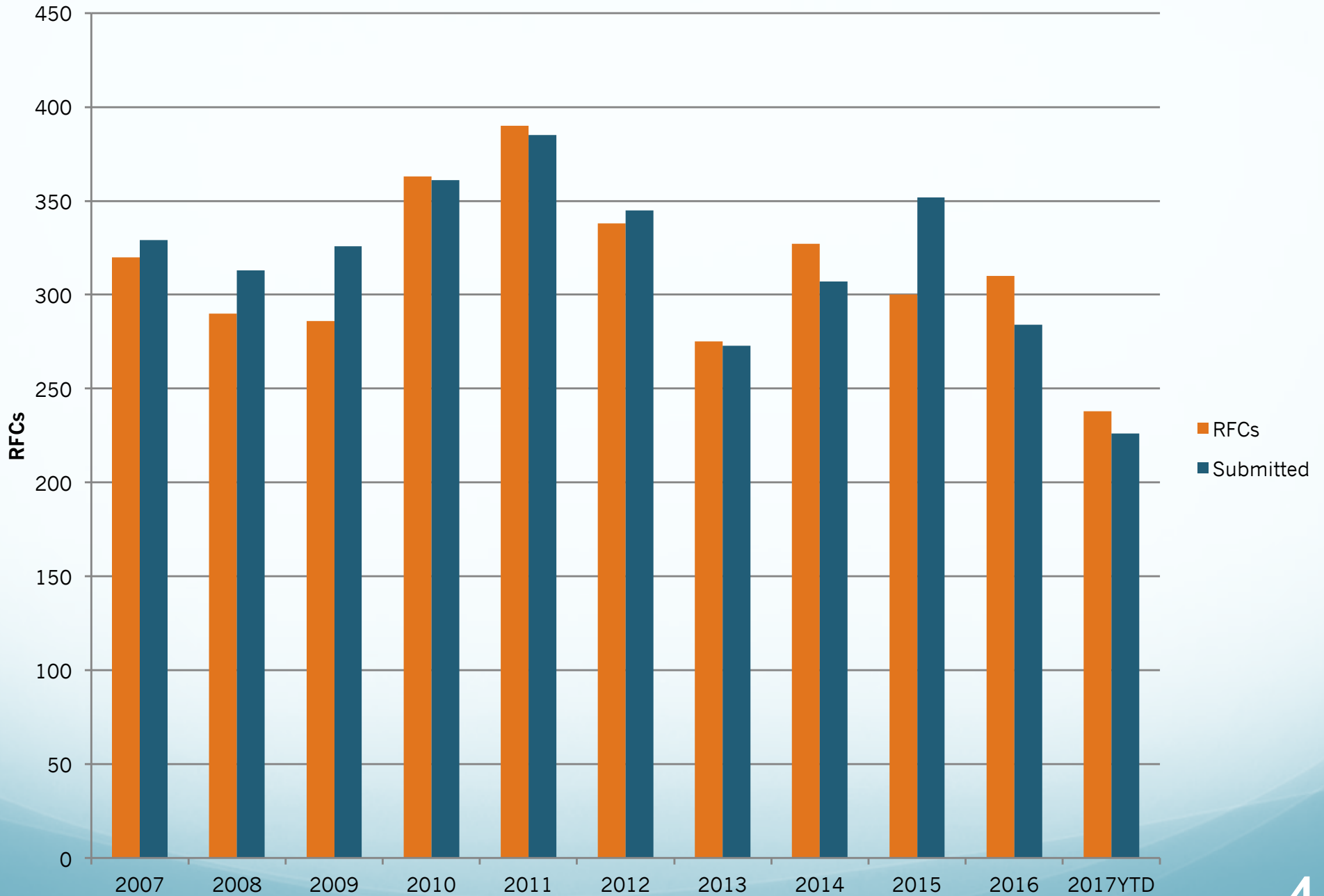
Notes: New SLA went into effect Jan. 2017; earlier data is provided for context. PGTE is calculated more accurately since a switch to new stats software in Oct. 2016.

# Primary Processing States

Pages by state from Jan. 1, 2016 to Dec. 31, 2017



## RFCs published from 2007 to 2017



# Since IETF 99

- Published 84 RFCs (2010 pages; Jul - Oct)
- Completed testing id2xml  
Being used when no usable source file is available
- Published 4 documents containing UTF-8 characters to test the process and tools
- Completed initial set of environment updates required for publishing test documents  
Final updates are part of the RPC's ongoing tooling effort

# Current & Ongoing Activities

- Keep editing and publishing RFCs
- Test v3 tools as they are released
  - XMLv3 -> txt converter expected soon
- Become familiar with v3 vocabulary
- Continue preparing systems to hold multiple file formats and to handle UTF-8 (database, errata system, related code)
- Draft internal procedures for v3 era as tools become more stable
- Draft v3-related user documentation that may help others
- Work with RSE on rfc7322bis (RFC Style Guide)